

1975 - Elevation : A

Skyline

3 or 4 Bed Room - 2.5 Bath



1st Floor



2nd Floor



Total Living	1975 sqft
First Floor Living	990 sqft
Second Floor Living	985 sqft



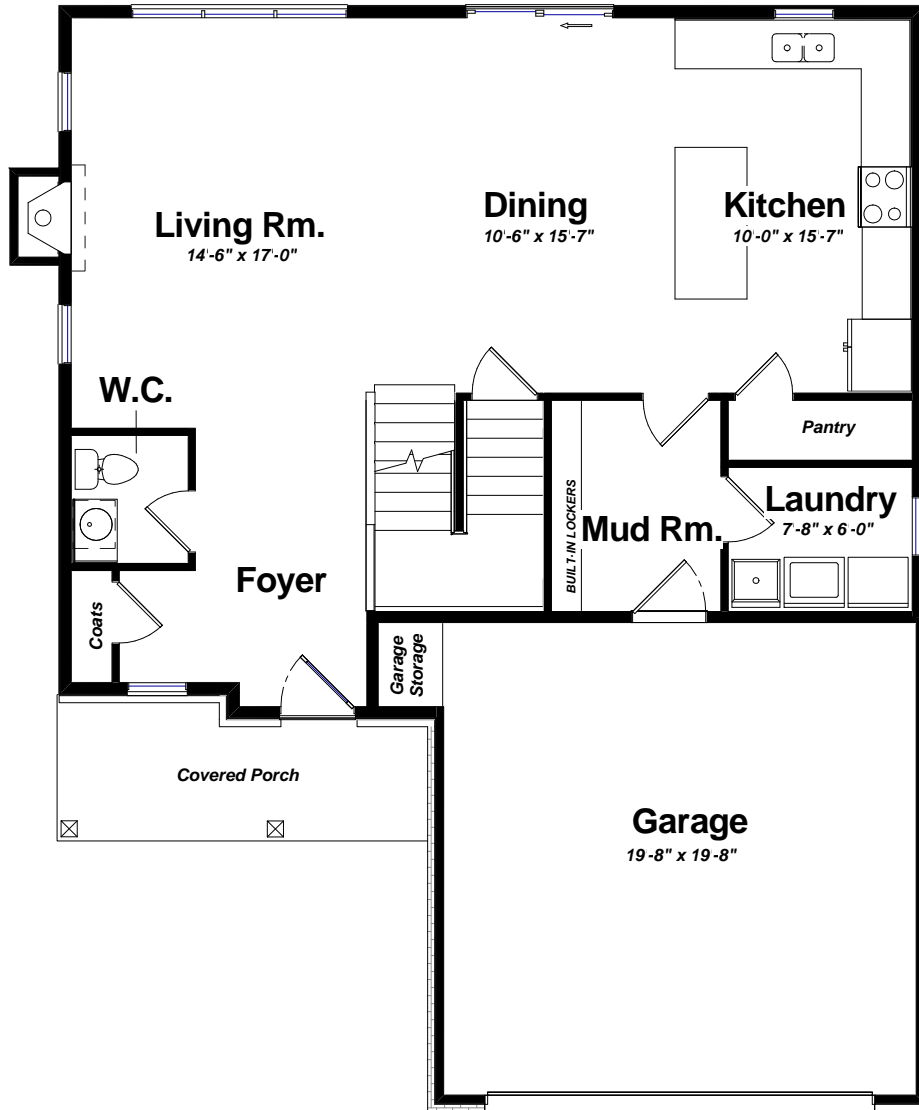
All dimensions are approximate and subject to normal construction variances. All images are artists' renderings for illustrative purposes only. The Builder reserves the right to make substitutions of materials, equipment, fixtures and finishes of comparable quality.



1975 - Elevation : A

Skyline

3 or 4 Bed Room - 2.5 Bath



1ST FLOOR PLAN



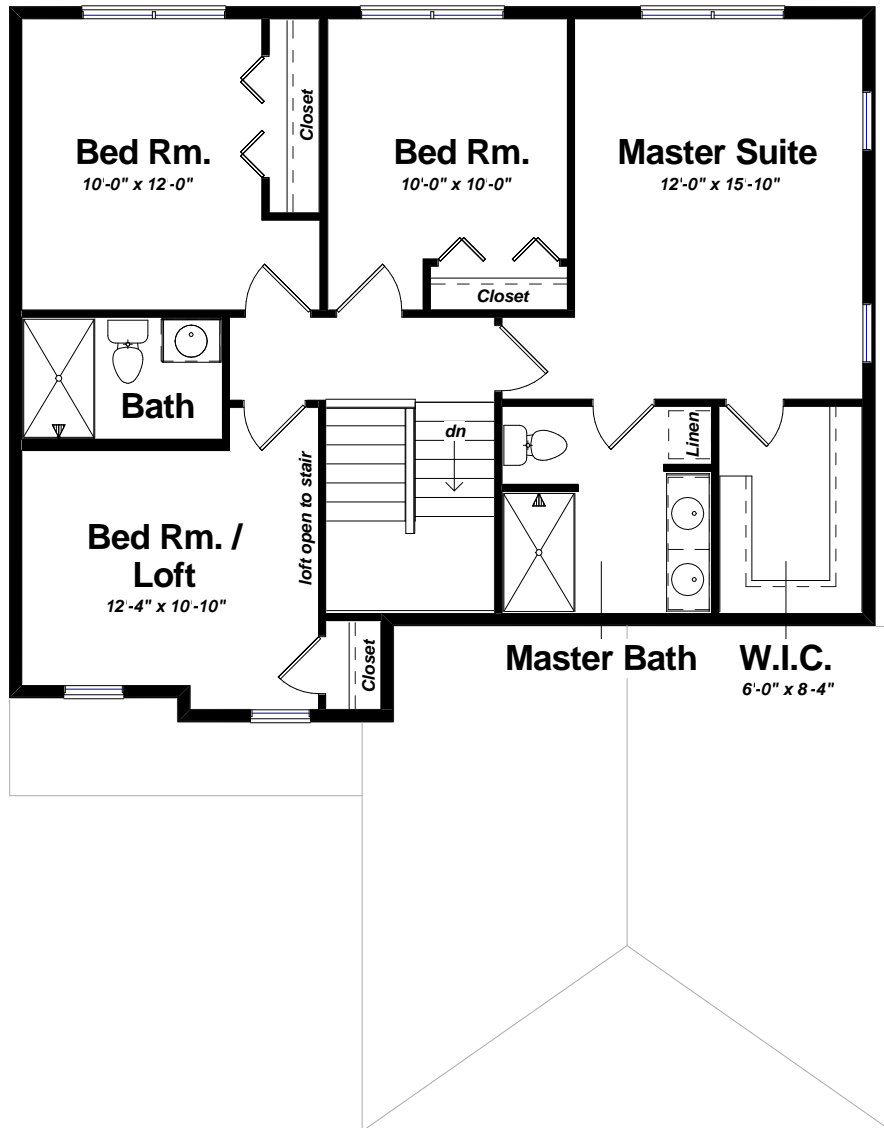
All dimensions are approximate and subject to normal construction variances. All images are artists' renderings for illustrative purposes only. The Builder reserves the right to make substitutions of materials, equipment, fixtures and finishes of comparable quality.



1975 - Elevation : A

Skyline

3 or 4 Bed Room - 2.5 Bath



2ND FLOOR PLAN